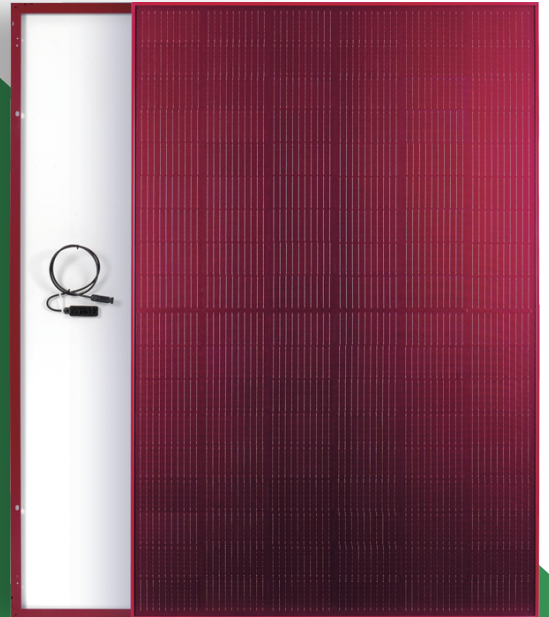
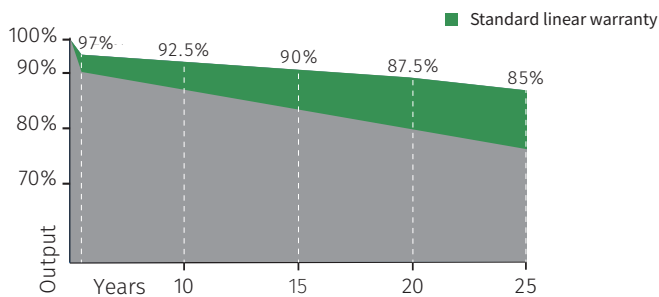


370-380W MONO Red PERC MBB half-cut cells

Red coloured glass and frame for special architectural requirements. For buildings of high aesthetical value and for areas subject to landscape constraints. Less shades and more reflected light to the cell thanks to the round ribbon. Two independent section design secures a higher energy yield under shaded conditions.



Linear performance Warranty



Linear performance warranty



Product warranty

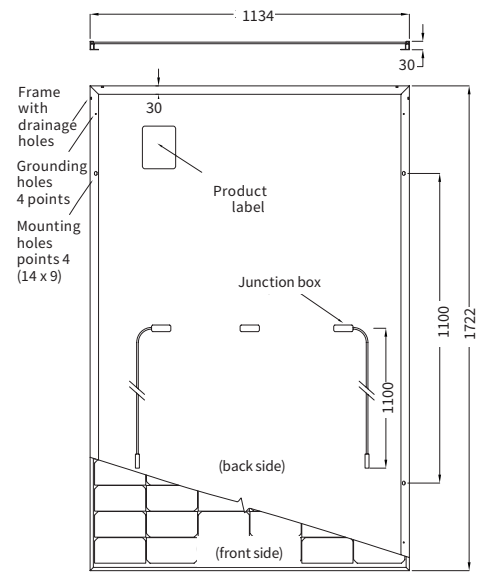
Comprehensive Certificates

CERTIFICATION

- IEC61215/IEC61730
- ISO9001:Quality Management System
- ISO14001:Environmental Management System
- ISO45001:Occupational Health and Safety Management System



MECHANICAL SPECIFICATIONS	
Dimensions	1722 x 1134 x 30 mm
Weight	20.8 kg
Color	Red, Orange, Silver
Glass	Red colour, tempered, thickness, 3.2 mm
Cells	108 monocrystalline half cut MBB PERC cells 182 x 91 mm
Frame	Varnished aluminium frame with mounting and drainage holes
Junction boxes	Certified according to IEC 62790, IP 68 approved, 3 bypass diodes
Cables	4.0mm ² 300mm or customized
Maximum reverse current (I _r)	25 A
Maximum system voltage	1000 V (1500 V on request)
Mechanical load (snow)	Design load: 3600 Pa 5400 Pa (including safety factor 1.5)
Mechanical load (wind)	Design load: 1600 Pa 2400 Pa (including safety factor 1.5)



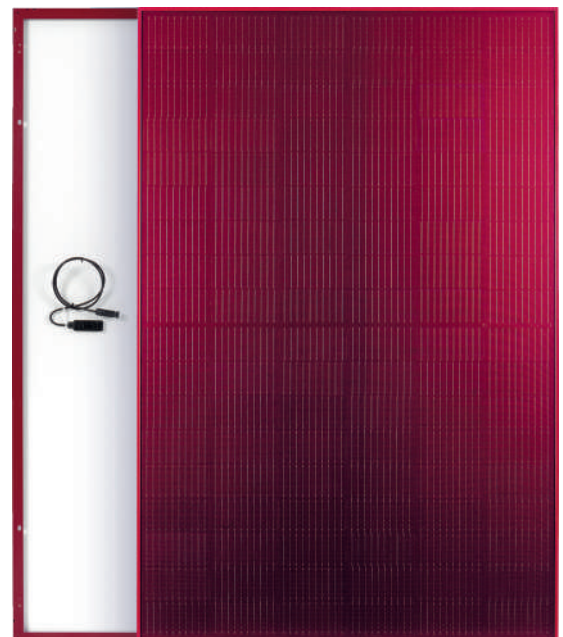
Note: dimensions in mm, tolerance +/- 2 mm

ELECTRICAL DATA - STC*		M182H654 370 W	M182H654 375 W	M182H654 380 W
Module power (P _{max})	W	370	375	380
Open circuit voltage (V _{oc})	V	37.71	37.85	37.99
Short circuit current (I _{sc})	A	12.31	12.43	12.56
Maximum power voltage (V _{mpp})	V	30.95	30.95	30.95
Maximum power current (I _{mpp})	A	11.82	11.94	12.06
Module efficiency	%	18.95%	19.20%	19.46%

ELECTRICAL DATA NOCT		M182H654 370 W	M182H654 375 W	M182H654 380 W
Module power (P _{max})	W	281	285	289
Open circuit voltage (V _{oc})	V	35.67	35.82	35.97
Short circuit current (I _{sc})	A	9.69	9.79	9.88
Maximum power voltage (V _{mpp})	V	29.31	29.42	29.53
Maximum power current (I _{mpp})	A	9.59	9.70	9.80

TEMPERATURE RATINGS		
Temperature coefficient I _{sc}	%/°C	0.05
Temperature coefficient V _{oc}	%/°C	-0.28
Temperature coefficient P _{max}	%/°C	-0.35
NOCT	°C	45
Operating temperature	°C	from -40 to +85

PACKAGING INFORMATION	
Quantity / Pallet	36 pcs
Container 40' HQ	936 pcs / 26 pallets



*Standard Test Conditions STC: 1000 W/m² - AM 1.5 - 25 °C - tolerance: P_{max} (±3%), V_{oc} (±4%), I_{sc} (±5%)

**Nominal Module Operating Temperature NOCT: 800 W/m² - T=45 °C - AM 1.5

Notice: All data and specifications are preliminary and subject to change without notice.